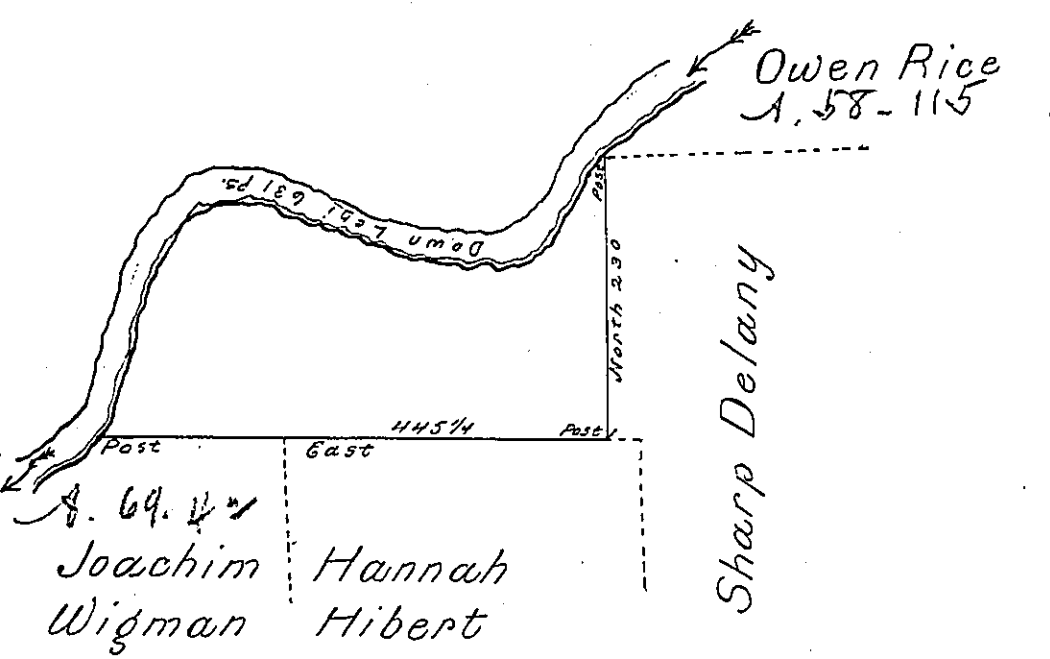


Bearing & Distance
down Lehi are

- 1. S. 27. W. 77 1/2
 - 2. S. 50 1/4 W. 11
 - 3. S. 70. W. 34
 - 4. S. 87. W. 48
 - 5. N. 84 1/2 W. 31
 - 6. N. 75 W. 51 1/2
 - 7. N. 80 1/2 W. 39
 - 8. N. 51 1/2 W. 22
 - 9. N. 67 W. 33 1/2
 - 10. S. 87 W. 60
 - 11. S. 66 W. 35
 - 12. S. 27 1/2 W. 24
 - 13. S. 12 W. 12 1/2
 - 14. S. 19 1/2 W. 7 1/2 +
 - 15. South 32
 - 16. S. 32 W. 36 1/2
 - 17. S. 38 W. 12
- 631



By Virtue of a Warrant dated the 3d. April 1792 Surveyed the 25th. August 1793 to Betsy Rice the above described tract of Land situate on the East side of Lehi in the County of Northampton Containing four hundred and two acres a quarter and the allowance of Six plant &c.

To Daniel Brodhead Esqr. }
Surgeon General } P. Geo. Palmer ob.

IN TESTIMONY that the above is a copy of the original remaining on file in the Department of Internal Affairs of Pennsylvania, made conformably to an Act of Assembly approved the 16th day of February, 1833, I have hereunto set my Hand and caused the Seal of said Department to be affixed at Harrisburg, this fifth day of September 1899



James W. Latta
Secretary of Internal Affairs.